

Ocrelizumab and serum Ig levels

Overview¹



Impact on IgG

- As of January 2020, following regular, 6-monthly dosing of OCR 600 mg, a mean reduction in serum IgG levels of approx. 3% per year was seen
- IgG levels remained above LLN for the majority of patients (>90%), over a period of up to 7 years



SI types and outcomes

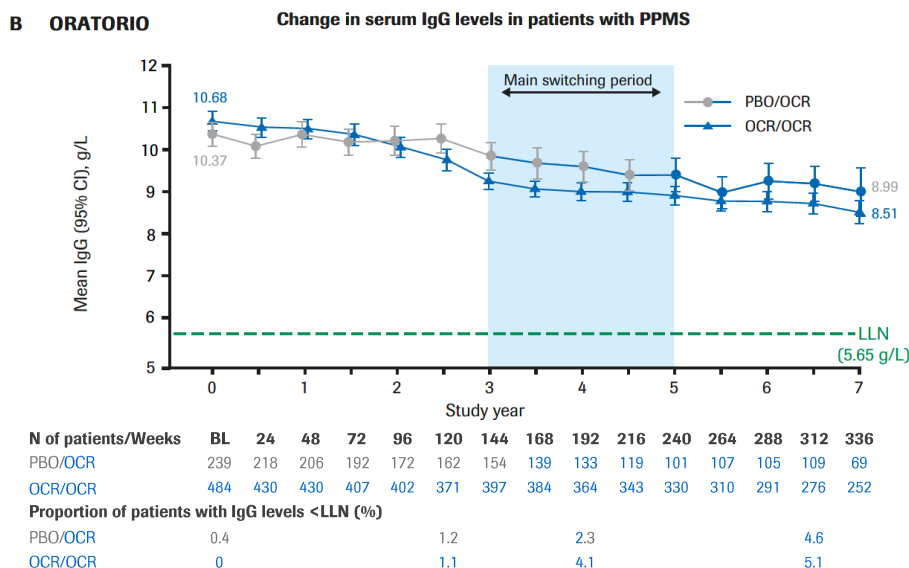
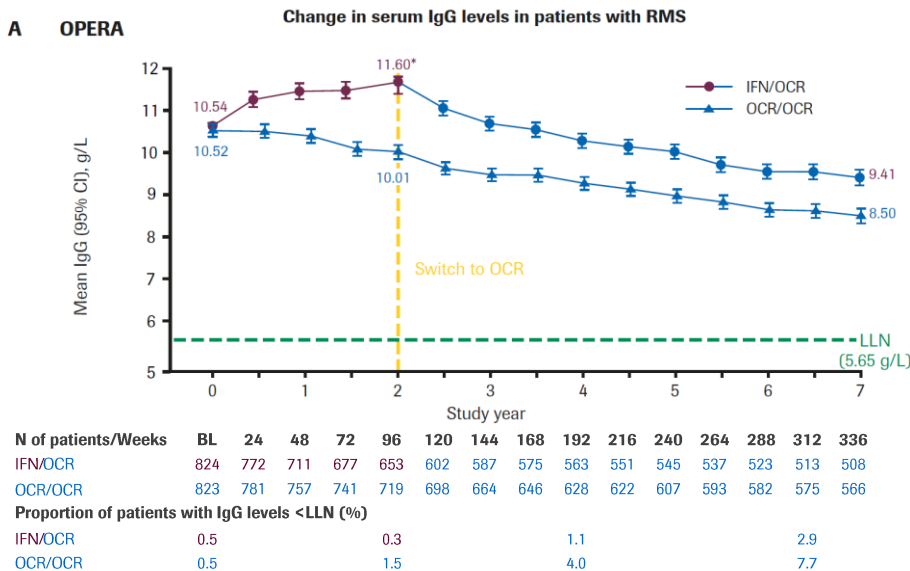
- The type, severity, duration, and outcome of SIs observed during episodes of Ig <LLN were similar to the overall population treated with OCR, and to the general MS population



Ig levels and SI incidence

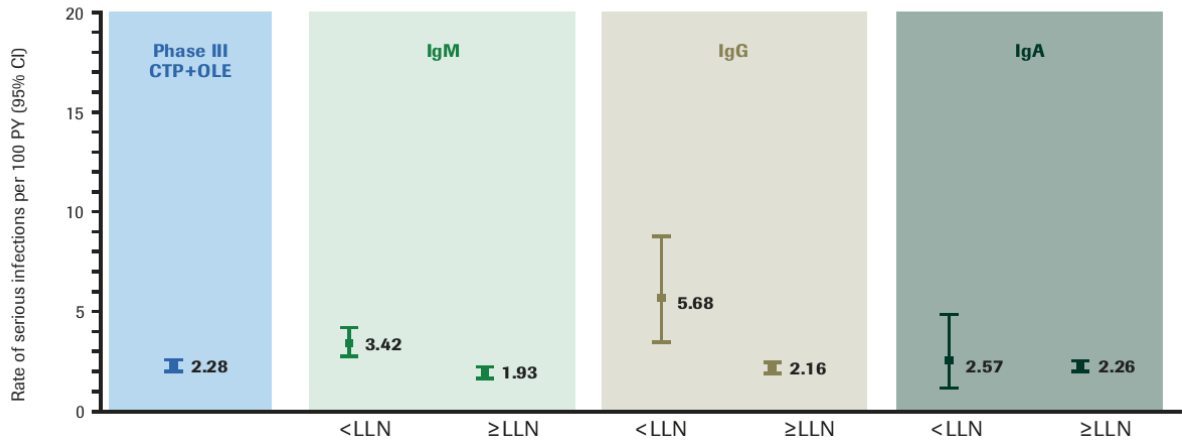
- While incidence of SIs was low, an apparent association between decreased IgG and SIs was observed (but less apparent for IgM and IgA)
- All patients with a SI associated with low IgG recovered
- few patients had to discontinue OCR due to a SI associated with Ig <LLN

Clinical trial population: Change in serum IgG levels



Clinical trial population: Relationship between rates of SIs and Ig values

Rates of serious infections associated with Ig values above or below the LLN in the phase III CTP+OLE population (OPERA and ORATORIO)



Patients (n)	2,092	813	1,279	198	1,894	154	1,938
Episodes (n)	-	1,092	2,460	356	2,305	208	2,153
PY	11,424	2,573	8,954	352	11,174	351	11,164
No. of SIs	261	88	173	20	241	9	252

Footnotes

Clinical trial population: Change in serum IgG levels

*In patients treated with IFN, an increase in serum IgG levels was observed over a 2-year period. This is consistent with previous findings from other groups.²

Data on proportion of patients with immunoglobulin levels <LLN shown only until Week 312, as data at Week 336 are not mature. The proportion of patients randomised to OCR in the OPERA population with IgG levels <LLN was 1.5% at Week 96, and 7.7% at Week 312 (OCR/OCR data). Similarly, the proportion of patients randomised to OCR in the ORATORIO population with IgG levels <LLN was 1.1% at Week 120, and 5.1% at Week 312 (OCR/OCR data).

Abbreviations

BL, baseline; CTP, controlled treatment period; IFN, interferon; Ig, immunoglobulin; LLN, lower limit of normal; OCR, ocrelizumab; OLE, open-label extension; PBO, placebo; PPMS, primary progressive MS; PY, patient-years; RMS, relapsing MS; SI, serious infection.

References

1. Hauser SL, *et al. Neurology* 2021;doi:10.1212/WNL.0000000000012700;
2. Mehling M, *et al. PLoS ONE* 2013;8:e78532.